

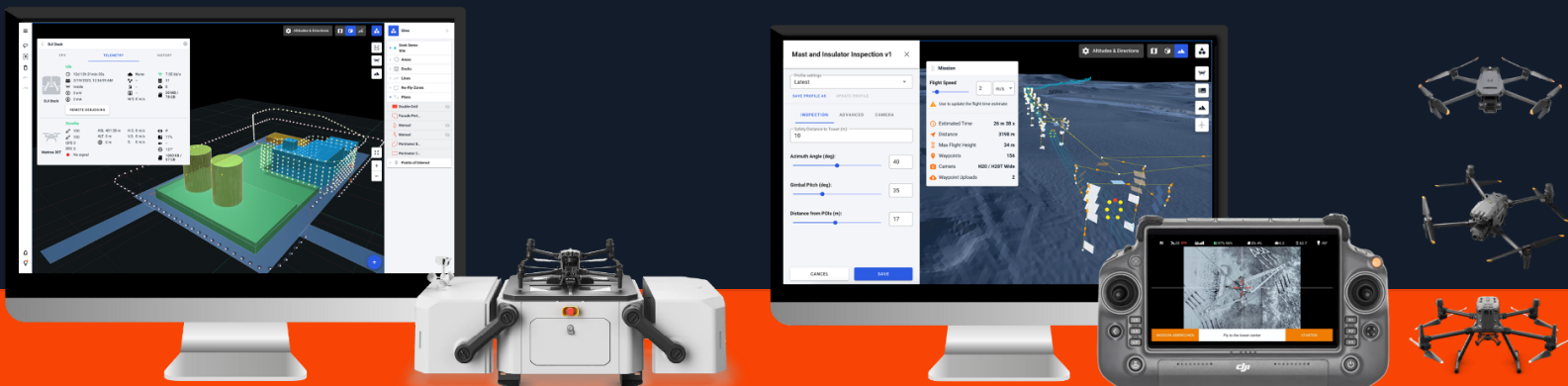
Drone Harmony Solutions Overview

The leading data acquisition and flight management platform for professionals and enterprises

Drone Harmony for DJI Dock

Drone Harmony Power Scanner

Drone Harmony for Mapping & Inspection



About Drone Harmony for DJI Dock

Drone Harmony for DJI Dock is the most powerful flight planning and management solution for the DJI Dock. Based on Drone Harmony's proprietary FULL-3D platform, Drone Harmony for DJI Dock provides unprecedented levels of control and visualization capabilities for the DJI Dock.



Data Security – Top Priority

Drone Harmony for DJI Dock was designed with the highest levels of data security in mind. In particular, the solution can easily be installed on a customer's own server (**on premise**), or a private network. In fact, Drone Harmony can be deployed in any of the following configurations:

- **Custom Server:** The entire solution is deployed on your IT infrastructure
- **Shared Secure Server:** The solution is deployed on a secure or certified server in your country or region that is shared among other users of a known category (e.g. law enforcement)
- **Drone Harmony Server:** The solution is deployed on a Microsoft Azure Server in the EU.

Contact: Haim Volinsky
sales@droneharmony.com
+41 43 333 84 41

Drone Harmony AG
Sonnentalstrasse 8
Postfach 232
8600 Dübendorf 1

www.droneharmony.com
contact@droneharmony.com
+41 43 333 84 41

About Drone Harmony Power Scanner

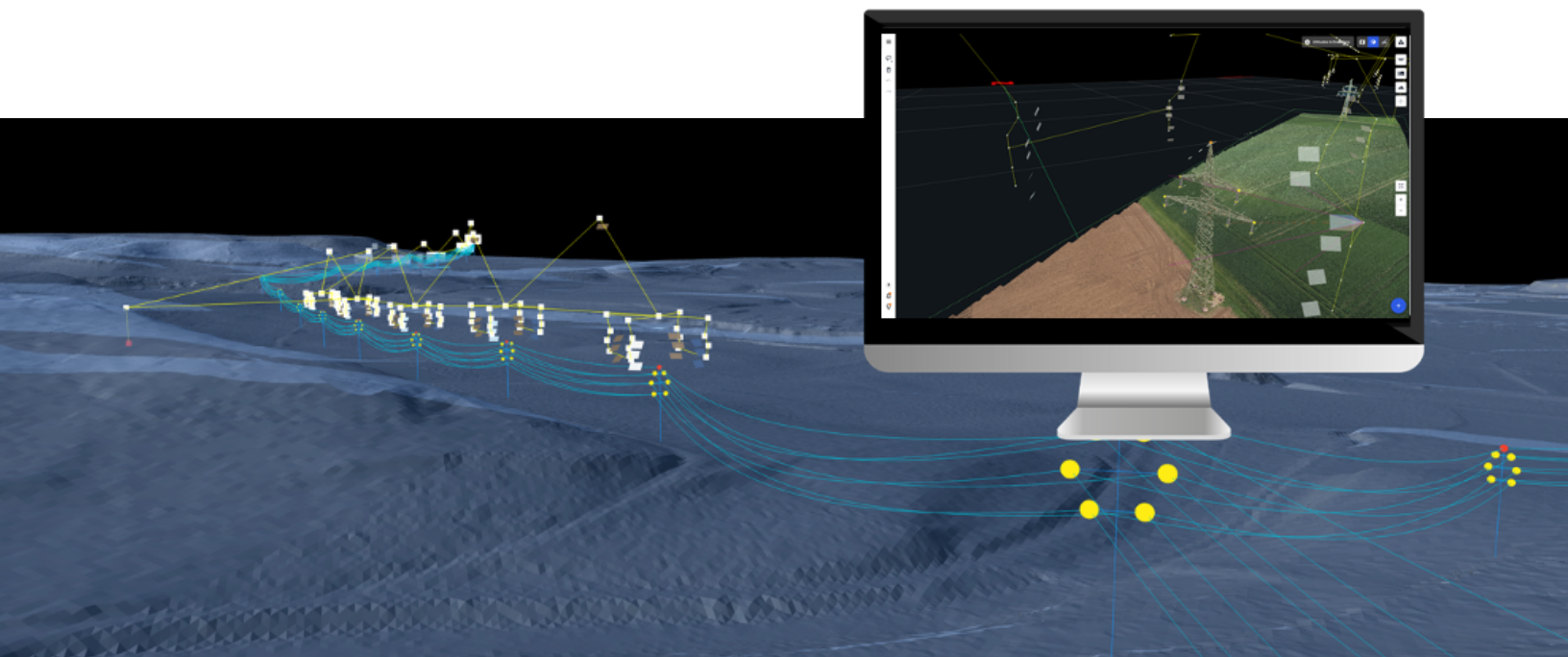
Drone Harmony Power Scanner is the complete data acquisition package for programmatic data acquisition of power lines and spans. It enables a rich variety of workflows from full automation based on custom 3D GIS data such as line vector and LiDAR data, to lean and efficient workflows relying on as little as rough pole geo-locations.

Power Scanner provides the following value to your data collection operation:

- Reliable and consistent raw data capture with advanced automation features
- Operational organization of complex captures across teams and plots
- Automated labeling and naming of captured imagery based on imported GIS data
- Data flow automation and integrations with digital inspection platforms
- Visualization in the only Full-3D interface for data acquisition on the market
- Automated improvement and enrichment of input GIS data based on drone capture

Power Scanner imports any of the following types of powerline data to automate and streamline your captures:

- Powerline vector data
- Terrain models
- Point clouds (LiDAR / photogrammetry)
- Custom maps
- Spreadsheet data
- Shape files



Contact: Haim Volinsky
sales@droneharmony.com
+41 43 333 84 41

Drone Harmony AG
Sonnentalstrasse 8
Postfach 232
8600 Dübendorf 1

www.droneharmony.com
contact@droneharmony.com
+41 43 333 84 41

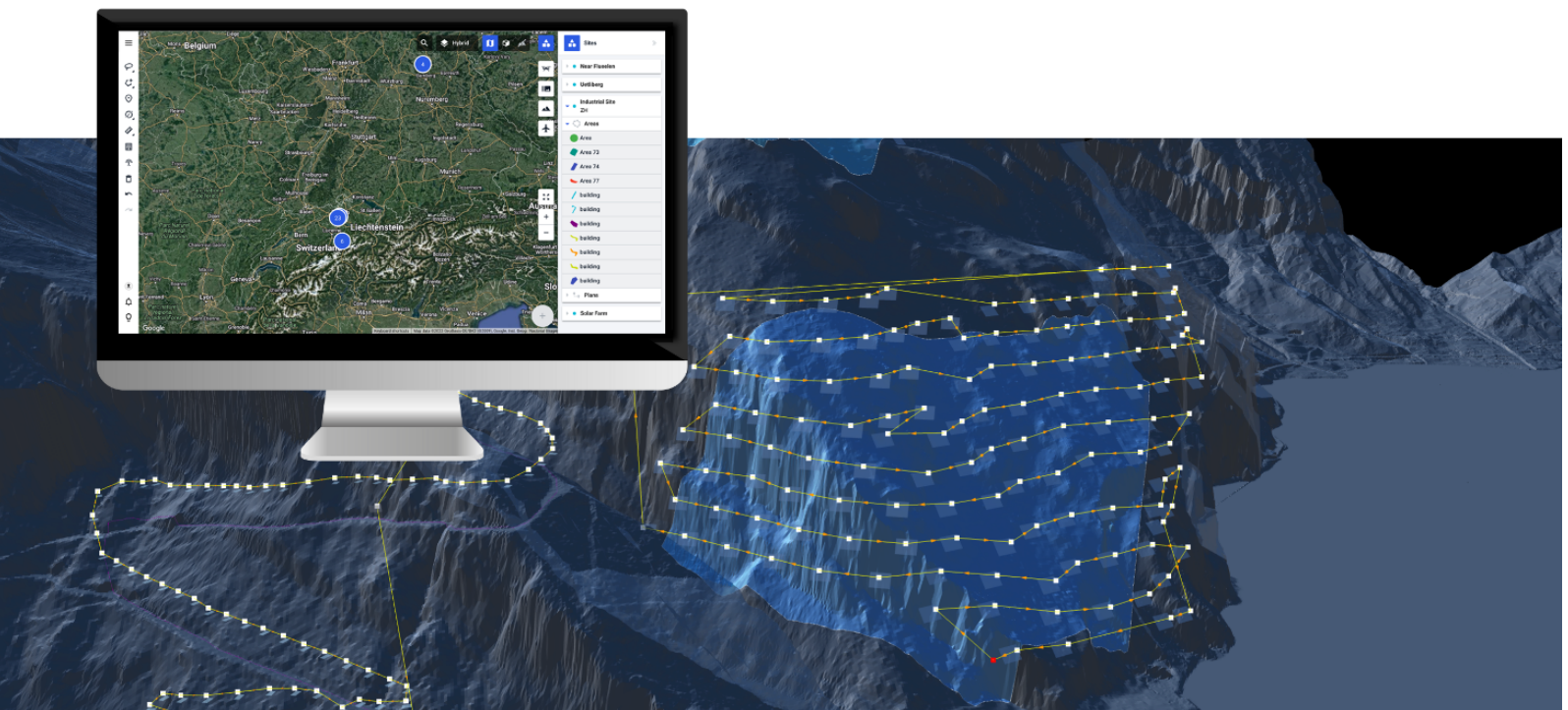
About Drone Harmony for Mapping & Inspection

Drone Harmony for Mapping & Inspection is the most comprehensive programmatic enterprise-grade data acquisition solution for mapping, GIS, surveying and inspection professionals. It seamlessly supports all enterprise DJI drones (Mavic & Matrice series).

Drone Harmony for Mapping & Inspection supports a variety of industries including

- Mapping
- Surveying
- GIS
- Agriculture
- Construction
- Mining
- Inspection
- Oil & Gas

Drone Harmony for Mapping and Inspection supports all enterprise DJI drones including Mavic 3 Enterprise, the Matrice 30, and Matrice 300 series drones. For a full list see [Supported Hardware & Software](#).



Contact: Haim Volinsky
sales@droneharmony.com
+41 43 333 84 41

Drone Harmony AG
Sonnentalstrasse 8
Postfach 232
8600 Dübendorf 1

www.droneharmony.com
contact@droneharmony.com
+41 43 333 84 41