

OWO-M30

DRONE PARACHUTE
PROTECTION SYSTEM



Flyfire.

INDUSTRIAL PARACHUTE SYSTEM

OWL-M30 Drone parachute, with flight control Onboard SDK interaction, enhances flight safety situational awareness, redundant design of important sensors, rapid assembly structure and APS emergency stop propeller Parachute opening system. In case of emergency! Stop the propeller, open the parachute, and fall slowly to protect the flight safety.



Sensor Redundancy
algorithm



APS automatic slurry
stop and parachute
open algorithm



Quick Installation
System



Parachute Reuse



Cloud

APS firmware up-
grade



International Safety
Certification



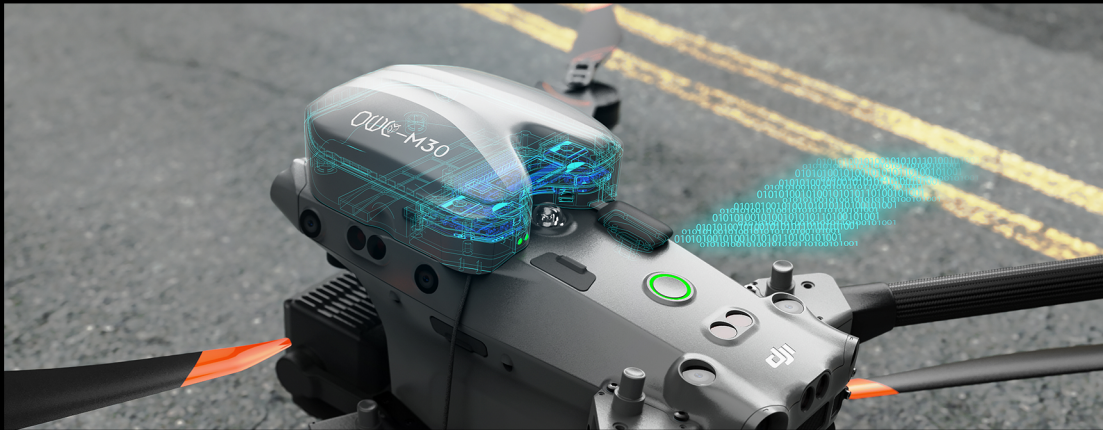
Acousto-optic warn-
ing



PSDK two-way inter-
action

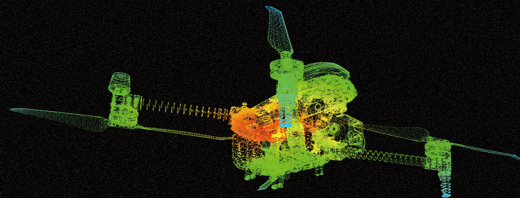
FUSION ALGORITHM COMBINED INTO ONE

Deep integration based on flight control PSDK interface, combined with Flyfire APS safety system, two-way interaction to enhance flight accident perception. In an instant, insight into the overall situation. During flight, the parachute system interacts with Drone data in real time, fuse and judge with its own sensor data at critical times, comprehensively perceive the flight state of Drone, ensure high rescue probability.



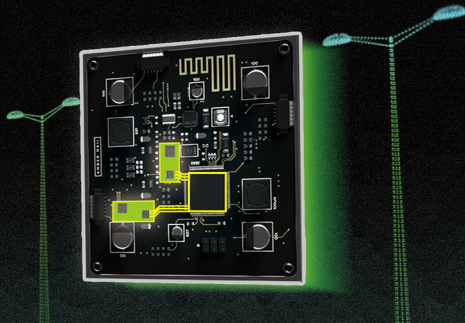
SENSOR REDUNDANCY ONLY FOR SAFETY

OWI-M30 parachute sensor adopts redundant design to deal with various accidents. When one group of sensors fails, the other group of sensors can be seamlessly connected at the same time to supplement data and accurately identify the flight state of Drone. Eliminate parachute failure and ensure the flight safety of Drone.



DUAL CORE ARCHITECTURE
NON-STOP DATA ACQUISITION

SENSOR REDUNDANCY
DUAL CONTROLLER ARCHITECTURE
MILLISECOND SWITCHING



QUICK SYSTEM REPLACEMENT

OWL-M30 parachute is easy to install and designed, which does not affect the folding and use of Drone and can work quickly on the field.

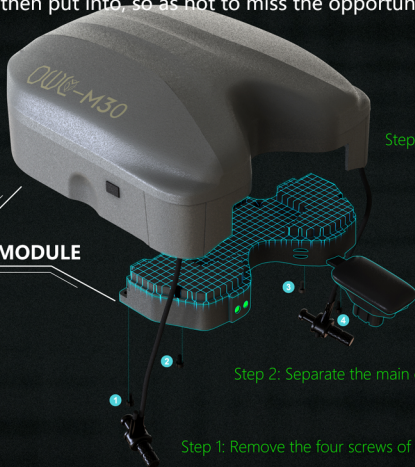


REPLACEABLE CONSUMABLES ARE REMOVED AND REPLACED IMMEDIATELY

The OWL-M30 parachute has reusable design. After opening, the pilot can change the parachute by himself. Change parachute in 120 seconds, then put into, so as not to miss the opportunity.

PARACHUTE LOSS PARTS

PARACHUTE MAIN CONTROL MODULE



Step 3: Replace and reinstall the parachute

Step 2: Separate the main control module from the parachute package

Step 1: Remove the four screws of the parachute main control module

APS AUTOMATIC PARACHUTE OPEN

In order to improve the reliability of the parachute, Flyfire constantly tests and simulates various complex accident situations and debugs the APS algorithm. In case of a sudden accident of the Drone, the APS automatic parachute open procedure will strictly follow the safety steps: stop the propeller - open the parachute - start the alarm - slow descent to protect the property safety of Drone and ground personnel.



APS ALGORITHM UPGRADE

In order to ensure the safety and reliability of flight, we will constantly optimize the firmware to ensure the best match between parachute and Drone firmware. We will provide you with the latest version of firmware through the Internet to protect every flight.



UNLIMITED TRAVEL SAFETY FIRST

OWL-M30 adopts i45 dustproof and waterproof grade and lightweight design to make flying safer in any weather conditions;
OWL-M30 adopts the modular design of consumable parts. After opening the parachute, you only need to replace the parachute cabin to reduce the impact on the operation progress.



SAFE POWER MORE ASSURED USE

High reliability parachute open structure, Flyfire adopts a new parachute cloth launching mode, and the main body of the parachute cloth dopts no traction block to open the umbrella, making every rescue smoother. When the parachute is triggered, the safety and controll ability are reatly improved, Make your task execution and teamwork safer every time.



SPECIFICATION PARAMETERS

PARACHUTE CLOTH SURFACE:	2.25 m²
WEIGHT:	280g
SIZE:	130×105×45mm
PARACHUTE SHAPE:	Square parachute
MODEL:	DJI-M30
OPERATING TEMPERATURE:	-20℃~60℃
WORKING ALTITUDE:	≤ 3500m
REACTION TIME:	500ms~600ms
IP PROTECTION LEVEL:	IP45
WIND RESISTANCE GRADE:	≤ Level 7
MINIMUM PARACHUTE OPEN HEIGHT:	23m
DESCENT SPEED:	4.6m/s
MAXIMUM LOAD CAPACITY:	≤ 4.5kg
REMOTE CONTROL FREQUENCY:	433MHz

Flyfire.

WWW.XFLYFIRE.COM